

# Give Us Room to Work



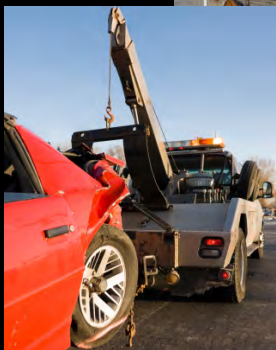
**Police**



**Fire**



**EMS**



**Tow Services**



**Maintenance**

**MOVE  
OVER  
SLOW DOWN**



**It's the Law!**



# New York's <sup>New</sup> Move Over Law:

Drivers **must** use due care when approaching an emergency vehicle that displays red &/or white emergency lights, or a hazard vehicle that displays amber warning lights.

- On all roads and highways, drivers **must** reduce speed for emergency vehicles.
- On parkways, interstates, and other controlled access highways with multiple lanes, drivers **must** move from the lane immediately adjacent to the emergency vehicle or hazard vehicle, **unless** traffic or other hazards exist to prevent doing so safely.

Give Us Room to Work



**MOVE  
OVER**  
SLOW DOWN

←  
**It's the Law!**